



**MORE JOBS.
MORE MONEY.
LESS LABOR.**

WE KNOW WHO YOU ARE AND WHAT YOU'RE MADE OF.

We've been where you're at. Long days in the Arizona heat installing stick for the umpteenth time. The building material products are heavy and unforgiving, often needing rework in the field when the job simply needs to get done by sundown.

We were tired of the status quo and challenged it head on by building a new product, a better product. We built HercuWall. More importantly, we created a whole new way of building, allowing the industry to build better together, the first time and every time.

CONSTRUCTION INSTALLATION IS HARD WORK,

but it doesn't have to be that hard, thanks to the new HercuWall AlignedAssembly™. This patented process takes the guesswork and rework out of stick thanks to its planned precision, simplified handling and fast execution.

THE LIGHTWEIGHT HERCUWALL PANELS ARE FAR EASIER TO WORK WITH

than ICF construction and other prefab wall panel systems, all while eliminating time-consuming steps, and providing superior strength and comfort. All this gives you more time to win more jobs and earn more money, with less labor.

HERCUWALL WILL GET YOU UP TO SPEED IN NO TIME

by providing all the training, certification, tools and estimating help you need to get started today. And through our builder network, we can provide you with nearby HercuWall jobs immediately.

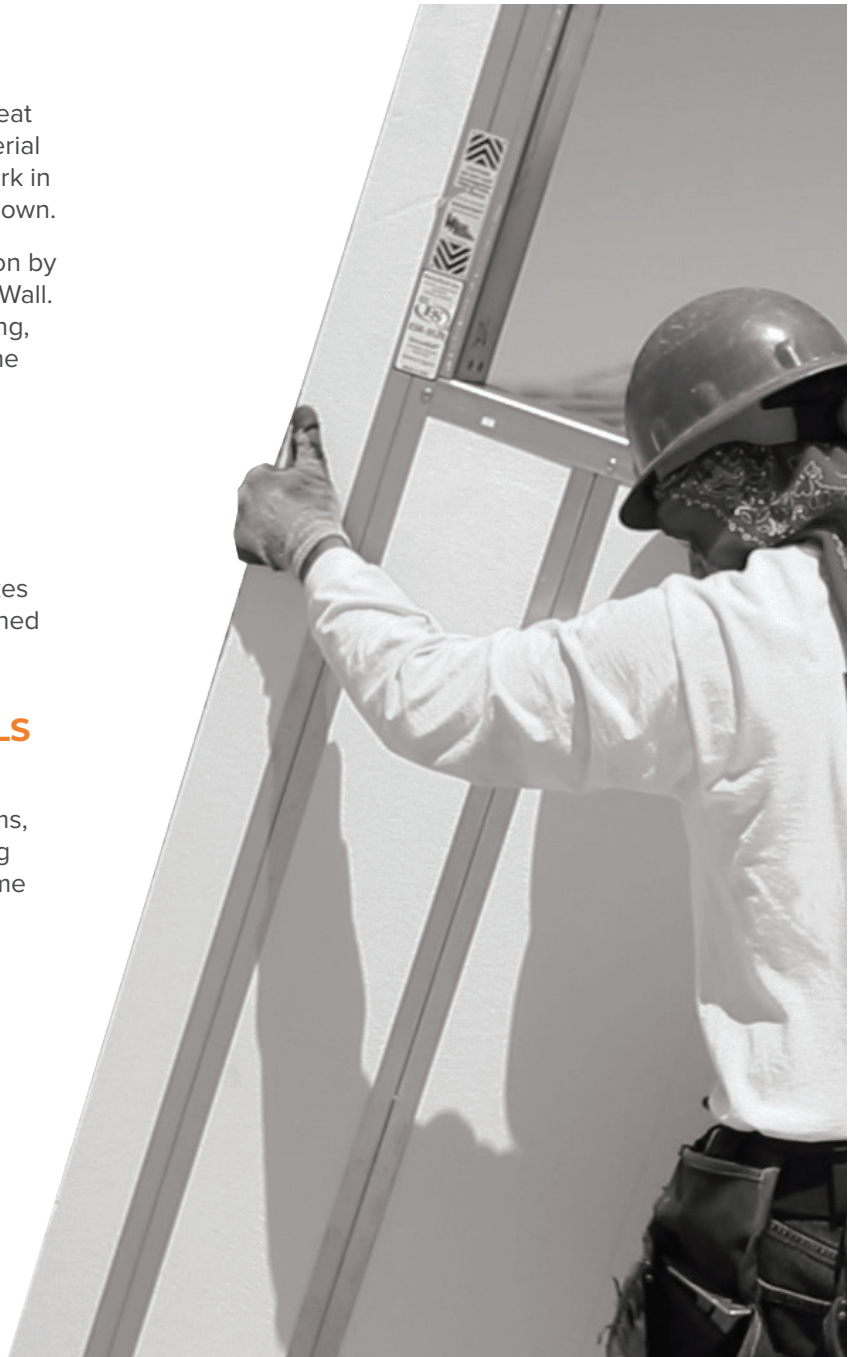
INSTALL WITH HERCUWALL

 **8980 S. McKemy St., Suite 101
Tempe, AZ 85284**

 **480.284.4535**

 **contact@hercutech.com**

 **www.HercuWall.com**



“After working with wood framing materials the last 20 years of my career both myself and my crews were burnt out. We were doing production work for 12 developers when the we finally hit our limit. HercuWall allows us to work smarter and accomplish more. Now with HercuWall the crews are energized and ready to work!”

– Randy Sorenson, Fuerte